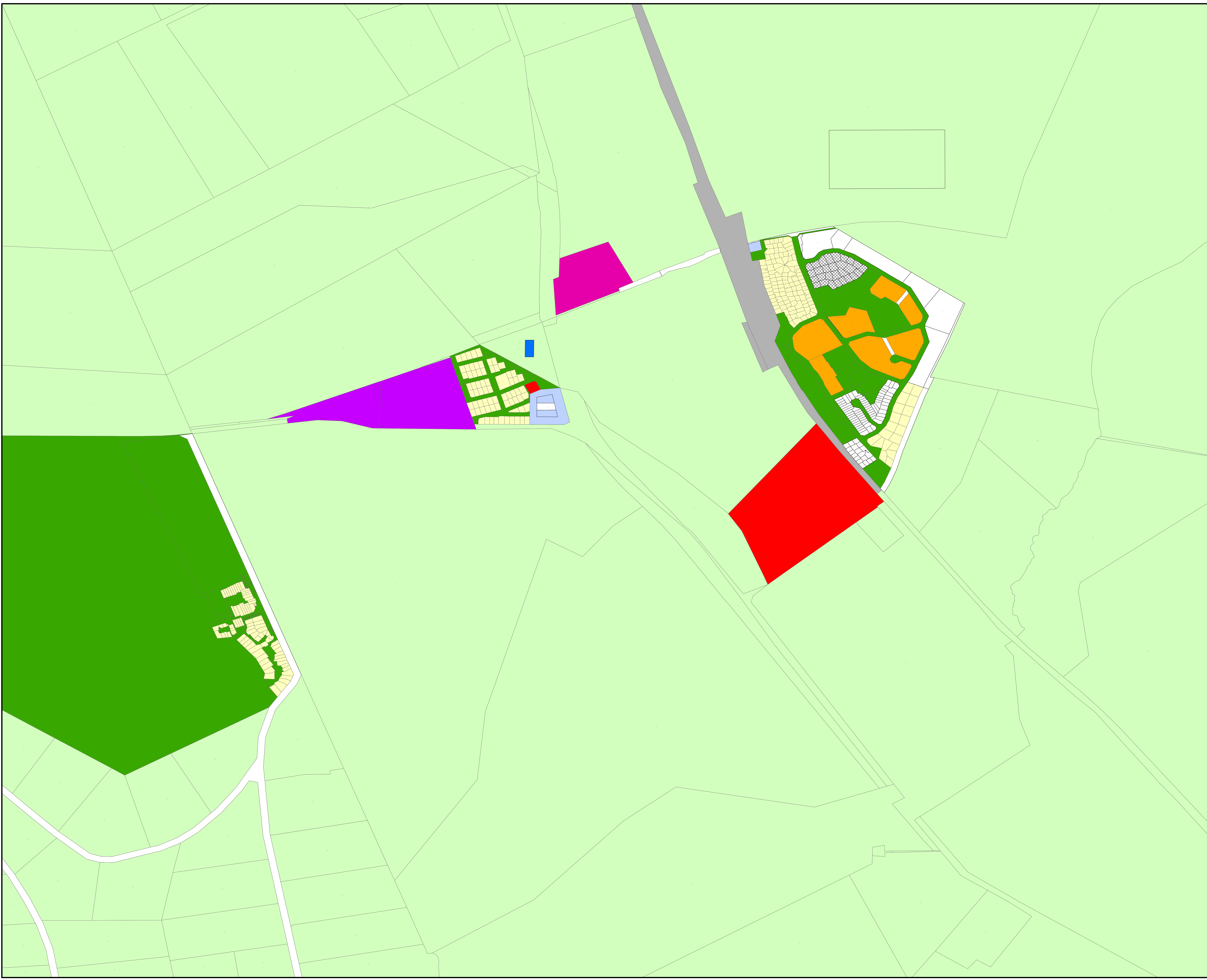


STELLENBOSCH MUNICIPALITY
ZONING SCHEME BY-LAW

KOELPARK & DEVONVALE

Zoning Scheme 2018

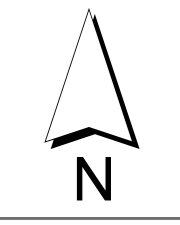
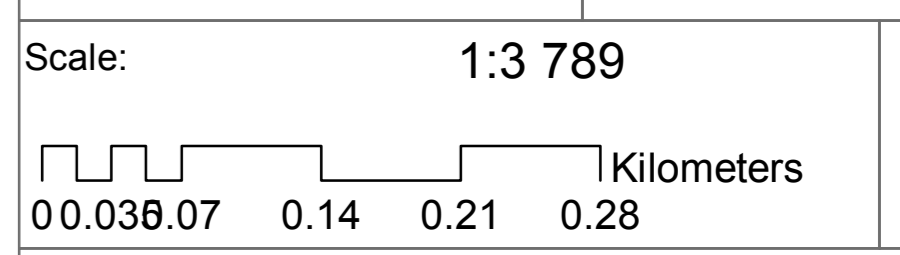
-  Conventional Residential Zone
-  Less Formal Residential Zone
-  Multi-unit Residential Zone
-  Community Zone
-  Education Zone
-  Industrial Zone
-  Limited Use Zone
-  Local Business Zone
-  Mixed Use Zone
-  Agriculture and Rural Zone
-  Private Open Space Zone
-  Public Open Space Zone
-  Public Roads and Parking Zone
-  Subdivisional Area
-  Transport Facility Zone
-  Utility Services Zone
-  Natural Environment Zone
-  Split Zone
(Colour of the rectangle corresponds with zoning of the split zone)



Source Ref:
Data : All data recieved from Client's consultants (@Planning)

File Ref: G009 Stellenbosch

Date: October 2018 Plan No: G/019



Created By:
Mduduzi Nhleko (SAGC Reg:GTgGISc0833)

Stellenbosch Municipality
Street Address:
71 Plein Street, Stellenbosch
Postal Address:
P O Box 17, Stellenbosch 7599
Tel: 021 808 8658
Fax: 021 886 6899
www.stellenbosch.gov.za

Disclaimer:
Kindly note that the zoning register and zoning maps displayed are based on 2012 data. The Municipality is in the process to update the maps and register with more recent decisions, which will be reflected in due course as decisions are captured. Provision is made in Scheme for correction of errors in the register and map which may be effected even after its adoption by Council.