

STELLENBOSCH
MUNICIPALITY
MOBILITY
FORUM

13 September
2018



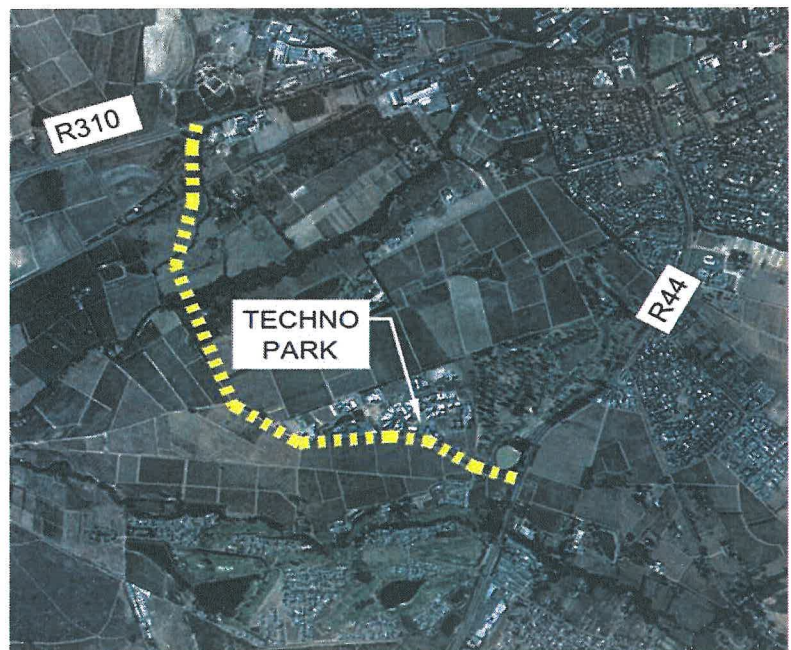
BACKGROUND

- To update the Municipalities Roads Master Plan (RMP) – The Engineering Directorate together with Planning Department – reviewed historic and planned land-uses, and required transport routes.
- Two of the most important transport routes that we are discussing today are:
 1. Western Bypass
 2. The Eastern Link Road
- The Municipality had recently appointed consultant WSP, to update the RMP – and assist with Traffic Planning and Modelling of these two routes.

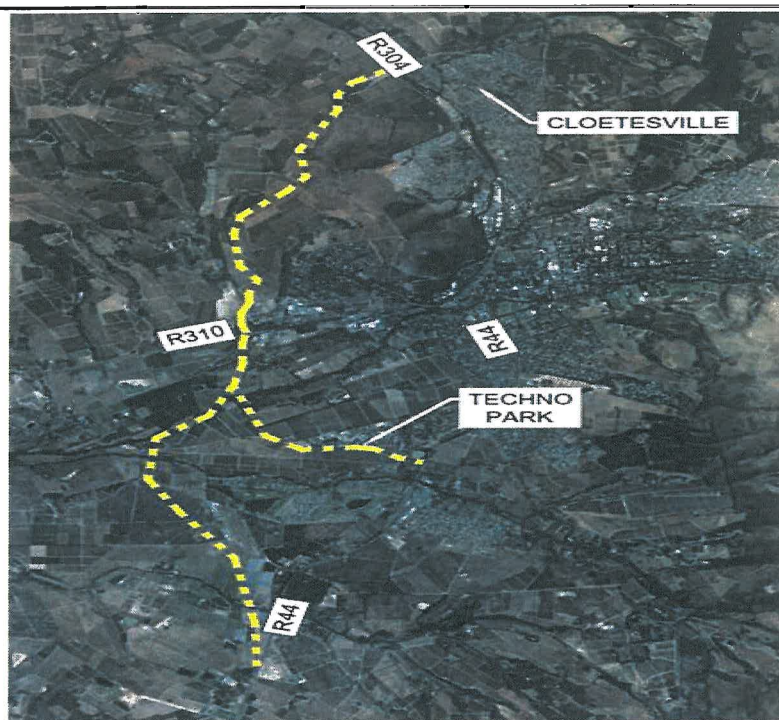
WESTERN BYPASS

- Western Bypass
 - The Municipality has identified the Priority Link between the section between Technopark and R310 Adam Tas road.
 - The complete Western Bypass consist of the following links:
 - Annandale Road to Technopark
 - Technopark to Adam Tas – Priority
 - Adam Tas to R304 Cloetesville / Kayamandi
 - The possibility of a full western bypass with its illustrated route proposal is currently in the feasibility study stage.

WESTERN PRIORITY LINK



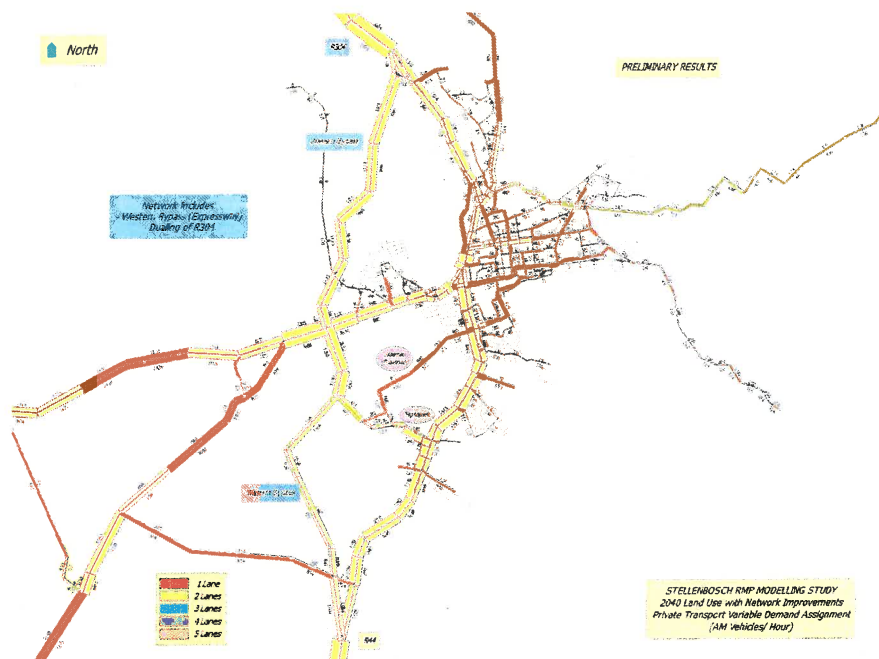
WESTERN BYPASS



EMME MODEL WESTERN BYPASS AND LINK

- The EMME or Transport Model slide depicts traffic volumes as line thickness – s thicker lines represent higher traffic volumes.
- The model results show, as a thick line, that the western priority link is an important “missing link” in the Stellenbosch Road Network.
- It will also support future land use developments at the Techno Park and Libertas, and may require duelling.
- The possibility of extending Van Reede road extends all the way to Techno Park as a local collector and possible public transport route is also being considered.

EMME MODEL WESTERN BYPASS AND LINK



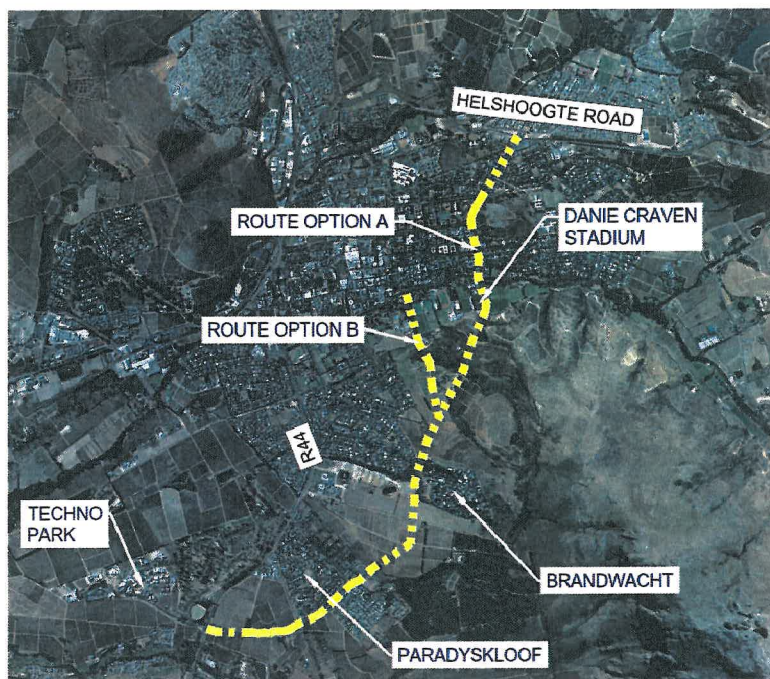
EASTERN LINK

- Eastern Link
 - To take into account Provincial Government requirements and proposed developments, a priority portion between Paradyskloof and Trumali road has been identified.
 - The full eastern link comprises of the following:
 - Techno Park to Paradyskloof (considered a next priority)
 - Paradyskloof to Trumali road
 - Through Brachwacht tie-ing into Stellenbosch CDB at the following possible positions:
 - Coetzenburg Road or Marias Road (Option A)
 - Landbou Saal (Option B)
 - The various route proposals currently under review.

EASTERN LINK PRIORITY PORTION



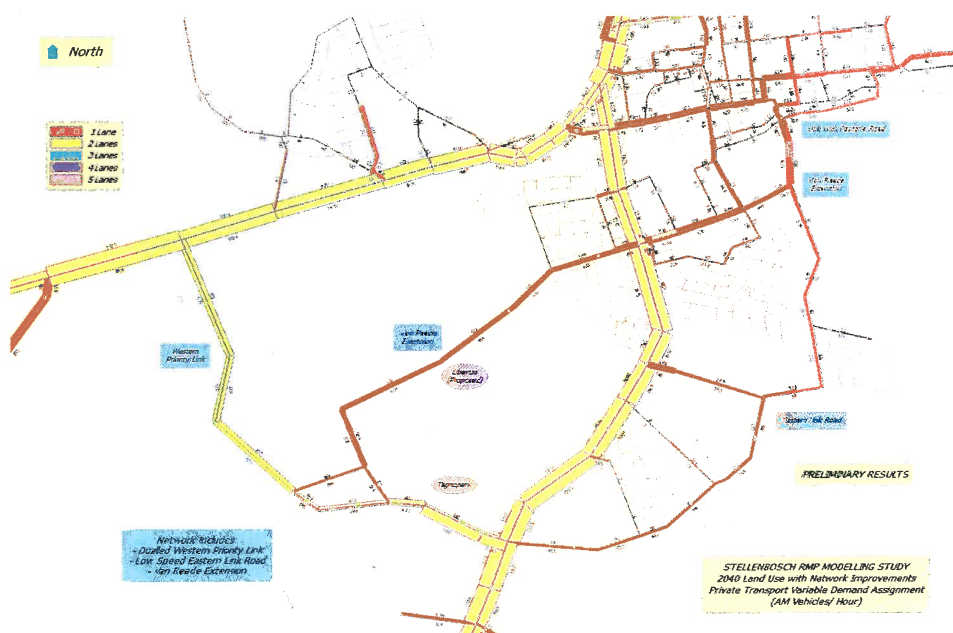
EASTERN LINK ROUTE OPTIONS



EMME MODEL EASTERN LINK

- The eastern link road should be a lower order, low speed road to function as an internal connector encouraging NMT / Cycle route.
- The traffic volumes are relatively low, except for the northern section between Van Reede and Pastorie roads.
- This section, together with the eastern extension of Van Reede, should also receive priority to relieve the congestion along Piet Retief Street.

EMME MODEL WESTERN PRIORITY LINK & EASTERN LINK



EASTERN LINK PRIORITY PORTION & WESTERN LINK

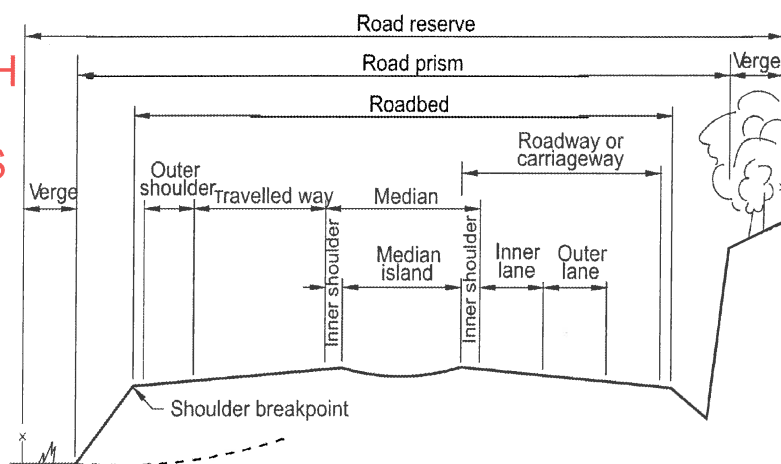
Studies have shown that our **current priorities i.e.** Eastern Link Priority Portion and Western Link:

- Provides for current and future transport needs.
- Allows of a balanced transportation network.
- All relevant road authorities are in agreement with these 2 priorities.

POSSIBLE STELLENBOSCH WESTERN BYPASS BENEFITS

- Will reroute through traffic past Stellenbosch CBD
- Will provide residential areas such as Jamestown, De Zalze,
- Paradyskloof, Kayamandi, Cloetesville the opportunity to bypass the CBD onroute to N1/Klapmuts/Somerset West
- In the regional context it will provide a south/north link between towns to the south of Stellenbosch and the N1
- Can be a scenic route

POSSIBLE STELLENBOSCH WESTERN BYPASS CROSS SECTION



POSSIBLE STELLENBOSCH EASTERN BYPASS BENEFITS

- Will provide direct link between Techno Park, Paradyskloof, Brandwacht/Dalsig and CBD/Schools/University and will serve as alternative route to R44
- Will provide important NMT route between these areas
- Will, together with second access to Techno Park, provide link between areas mentioned above and Adam Tas Road
- A much shorter route to the N2/Airport
- This will also reduce traffic on roads such as Van Reede Street, Dorp Street, Piet Retief Street and sections of Adam Tas Street
- Can also serve as a public transport route

POSSIBLE EASTERN LINK ROAD CROSS SECTION

